

# Describe and Explain Talk Template

Use this template for planning and during spoken language tasks.

What is it?



What does it have?



What is it for?  
What does it do?



Why?



Why?



Where would you find it?  
Where would it be used?



Who might need it?  
When is it needed?



Why?



Why?



# Suggest and Evaluate Talk Template

Use this template for planning and during spoken language tasks.

We are thinking about

Idea 1

I like this idea because



I don't like this idea because

I like this idea because



I don't like this idea because

Idea 2

Idea 1

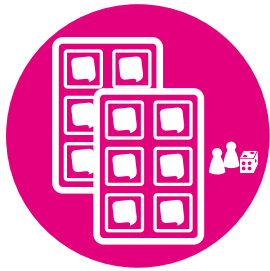
I like this idea because



I don't like this idea because



## SCREENING & ASSESSMENT



## PLANS & RESOURCES



## HELP DESK SUPPORT



## REPORTS & ANALYSIS



## TRAINING

## Speech Link and Language Link

Created and supported by our speech and language therapists, the Speech Link and Language Link online packages are available through an annual subscription. They are designed to work alongside your school's speech and language services to reduce waiting times, numbers of referrals and give you tools to manage children with SLCN within your classes.

Robust, child-friendly assessments plus guided interventions with hundreds of resources enable your staff to put appropriate support in place as early as possible. We provide in-package training and our friendly Speech & Language Help Desk is there to support you every step of the way.

# BOOK A FREE TRIAL

[www.speechandlanguage.info](http://www.speechandlanguage.info)

### The Link Speech and Language CPD

Our online, tutor-led, Link Speech and Language CPD courses will build staff skills and confidence for working with children with SLCN. Find out more at:

[www.speechandlanguage.info/cpd](http://www.speechandlanguage.info/cpd)

