

## SAGE Inference Card

Objective: To develop the ability to combine new information with what is already known about how the world works to make inferences. This approach can be used for individual children or across the whole class. The SAGE inference card can be used with any pictures from books or magazines or a passage of text.

How to use: Use the SAGE card to break down comprehension tasks into smaller steps. Ask the questions in order to help the child combine the new information in the task with information they already know. Underline key parts of the text or a picture in coloured pens to represent the different SAGE questions. This will help children to focus on the part of the text or picture that holds the key information. Use a SAGE bookmark to share with parents for home practice.

### SAGE Inference Card



**S** what can you **see?**

**a** what do you **already know?**

**g** what can you **guess?**

**e** **explain** your answer



**S**ee

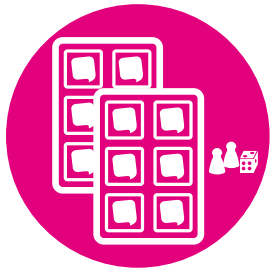
**a**lready know

**g**uess

**e**xplain



## SCREENING & ASSESSMENT



## PLANS & RESOURCES



## HELP DESK SUPPORT



## REPORTS & ANALYSIS



## TRAINING

## Speech Link and Language Link

Created and supported by our speech and language therapists, the Speech Link and Language Link online packages are available through an annual subscription. They are designed to work alongside your school's speech and language services to reduce waiting times, numbers of referrals and give you tools to manage children with SLCN within your classes.

Robust, child-friendly assessments plus guided interventions with hundreds of resources enable your staff to put appropriate support in place as early as possible. We provide in-package training and our friendly Speech & Language Help Desk is there to support you every step of the way.

# BOOK A FREE TRIAL

[www.speechandlanguage.info](http://www.speechandlanguage.info)

### The Link Speech and Language CPD

Our online, tutor-led, Link Speech and Language CPD courses will build staff skills and confidence for working with children with SLCN. Find out more at:

[www.speechandlanguage.info/cpd](http://www.speechandlanguage.info/cpd)

