

Question Cue Cards

These colour-coded **Question Cue Cards** are helpful in a variety of classroom situations to develop understanding of question words. They are suitable for use with individual children or, ideally, as a whole class approach.

How to use:

Introduce one question card at a time ensuring the children understand the sort of information that answers each question, e.g., **where?** - places, **who?** - people or animals, **what doing?** - action words (verbs).

Mind maps are a good way to introduce each question word. Place the card on a piece of backing paper the same colour, e.g., for the **who?** card use pink paper. Ask the children to give you examples that answer a who question (Mrs Legg, the dog, the Head Teacher, Mary, etc). You could also use some pictures of people and places and ask the children which pictures go on the pink **who?** board, i.e. answer a who question.

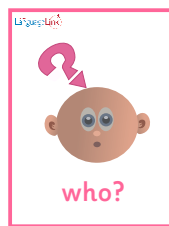
Once the cards have been introduced use them on displays and during whole class delivery/question time. For example, when you are asking the class, “**Where** do we pour the water?” hold up the **where?** card.

Extension ideas:

Use these cards to support written narrative work, encourage children to use each card to tell their news or a story, e.g.,



On Sunday



my Dad and I



went to

the park.

During reading comprehension tasks, children can use the cards to help answer questions about the passage. Use the colours to help children understand the text. For example, underline all **who** information in pink and all **where** information in blue, etc.

NB: Start with **who?** **what?** **where?** then **when?**. These are simpler than **how?** and **why?**.



INFANT LanguageLink



who?

Copyright ©2023 Speech Link Multimedia Ltd.

INFANT LanguageLink



where?

Copyright ©2023 Speech Link Multimedia Ltd.

INFANT LanguageLink



what doing?

Copyright ©2023 Speech Link Multimedia Ltd.

INFANT LanguageLink



when?

Copyright ©2023 Speech Link Multimedia Ltd.

INFANT LanguageLink



what?

Copyright ©2023 Speech Link Multimedia Ltd.

INFANT LanguageLink



why?

Copyright ©2023 Speech Link Multimedia Ltd.

INFANT LanguageLink



what like?

Copyright ©2023 Speech Link Multimedia Ltd.

INFANT LanguageLink

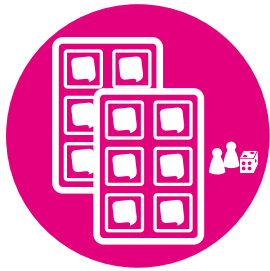


how?

Copyright ©2023 Speech Link Multimedia Ltd.



SCREENING & ASSESSMENT



PLANS & RESOURCES



HELP DESK SUPPORT



REPORTS & ANALYSIS



TRAINING

Speech Link and Language Link

Created and supported by our speech and language therapists, the Speech Link and Language Link online packages are available through an annual subscription. They are designed to work alongside your school's speech and language services to reduce waiting times, numbers of referrals and give you tools to manage children with SLCN within your classes.

Robust, child-friendly assessments plus guided interventions with hundreds of resources enable your staff to put appropriate support in place as early as possible. We provide in-package training and our friendly Speech & Language Help Desk is there to support you every step of the way.

BOOK A FREE TRIAL

www.speechandlanguage.info

The Link Speech and Language CPD

Our online, tutor-led, Link Speech and Language CPD courses will build staff skills and confidence for working with children with SLCN. Find out more at:

www.speechandlanguage.info/cpd

