

Listening cards

Use these cards to improve children's listening skills in the classroom and in small groups. They break listening down into core skills to help you provide children with feedback for what is working well and what needs to be improved.

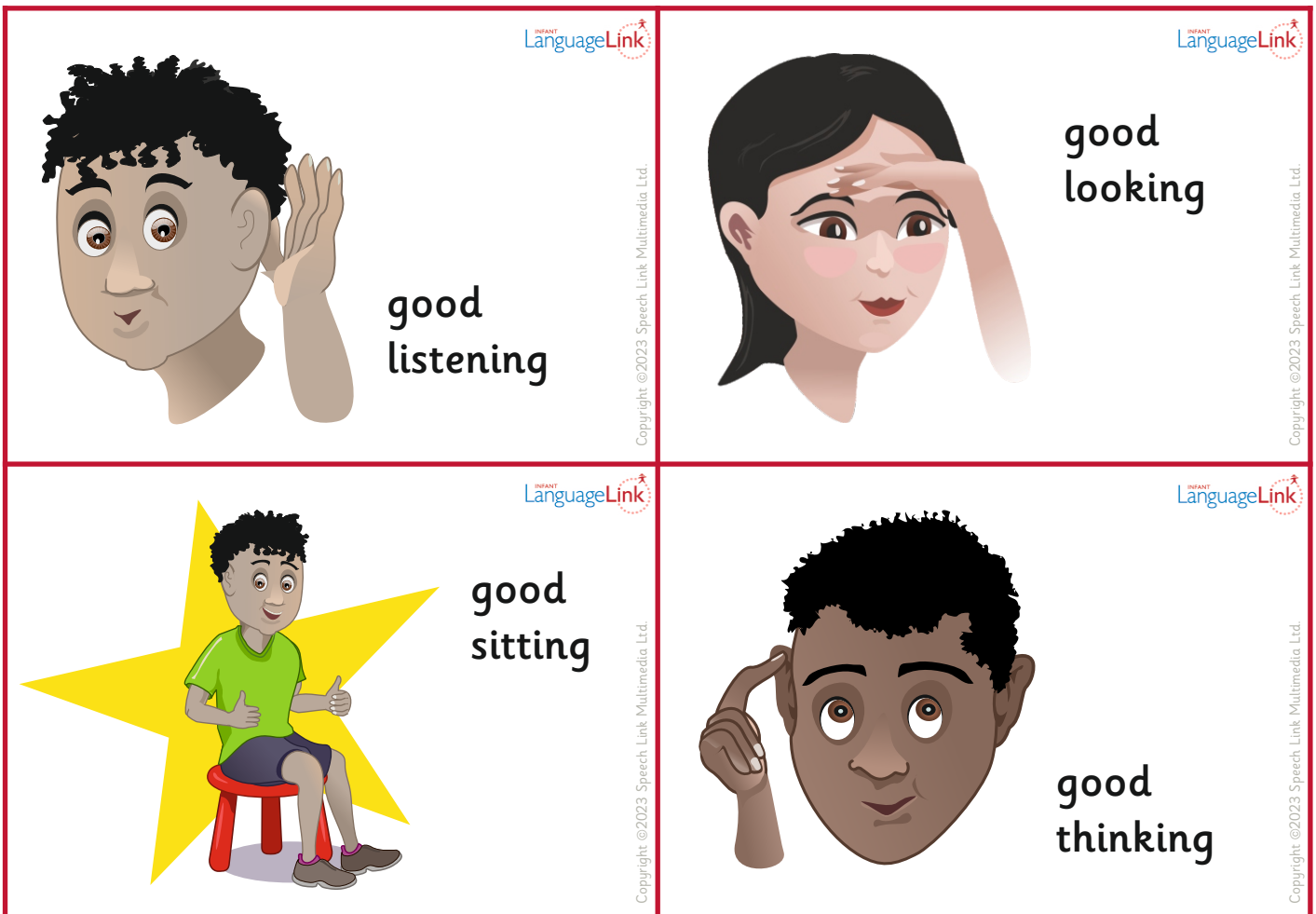
How to use the cards:

Introduce the cards in the group or in class and explain what they mean, e.g., "To do good listening you need to do..."

- Good sitting - sitting still, no wriggling about
- Good looking - this means looking at the person who is talking
- Good thinking - this means thinking hard about the words you hear

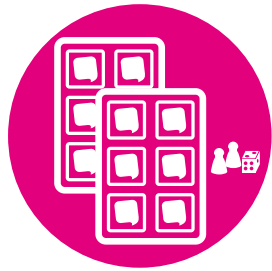
Use the cards throughout the group/lesson to remind children of the rules of good listening. Give specific feedback to children, such as, "You are looking at me when I am talking, that means I know you are doing good looking." Or, "I can see you are wriggling about and not doing good sitting."

You can download more listening resources when you subscribe to Infant Language Link.





SCREENING & ASSESSMENT



PLANS & RESOURCES



HELP DESK SUPPORT



REPORTS & ANALYSIS



TRAINING

Speech Link and Language Link

Created and supported by our speech and language therapists, the Speech Link and Language Link online packages are available through an annual subscription. They are designed to work alongside your school's speech and language services to reduce waiting times, numbers of referrals and give you tools to manage children with SLCN within your classes.

Robust, child-friendly assessments plus guided interventions with hundreds of resources enable your staff to put appropriate support in place as early as possible. We provide in-package training and our friendly Speech & Language Help Desk is there to support you every step of the way.

BOOK A FREE TRIAL

www.speechandlanguage.info

The Link Speech and Language CPD

Our online, tutor-led, Link Speech and Language CPD courses will build staff skills and confidence for working with children with SLCN. Find out more at:

www.speechandlanguage.info/cpd

