

Descriptor cards

Use these cards to work on describing skills to boost vocabulary. Choose a card and ask the child or group each of the questions about the picture. Once the children can answer the questions you are ready to move on to either of the following games. Use the blank cards with any pictures.

Guess what I am: Place some cards face down on the table. The first player takes a card and without showing it to the group describes it for the group to guess. Play passes to the player who guesses correctly.

Similarities and differences: Choose two cards and place them side by side. Work through the questions deciding what are similar and different features between the two cards.



Where do you find it?

When do you see it?

What is special about it?

What is the first sound?

Copyright ©2023 Speech Link Multimedia Ltd.



Where do you find it?

When do you see it?

What is special about it?

What is the first sound?

Copyright ©2023 Speech Link Multimedia Ltd.



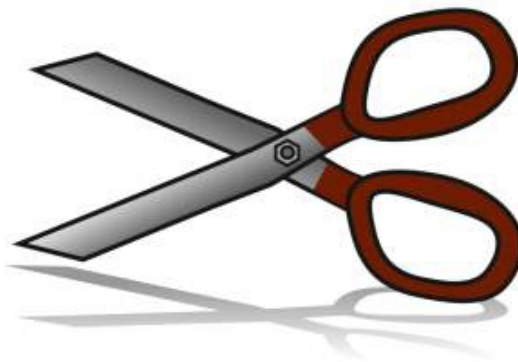
What is it for?

Where do you find it?

What is special about it?

What is the first sound?

Copyright ©2023 Speech Link Multimedia Ltd.



What is it for?

Where do you find it?

What is special about it?

What is the first sound?

Copyright ©2023 Speech Link Multimedia Ltd.



What is it for?

What group is it from?

What is special about it?

What is the first sound?

Copyright ©2023 Speech Link Multimedia Ltd.



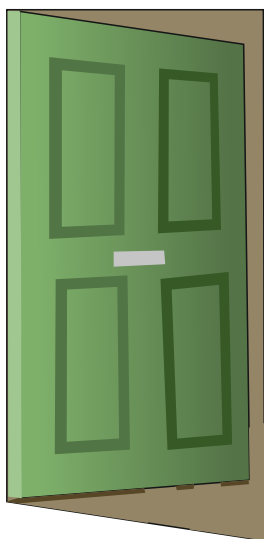
What is it for?

What group is it from?

What is special about it?

What is the first sound?

Copyright ©2023 Speech Link Multimedia Ltd.



What is it for?

Where do you find it?

What is special about it?

What is the first sound?

Copyright ©2023 Speech Link Multimedia Ltd.



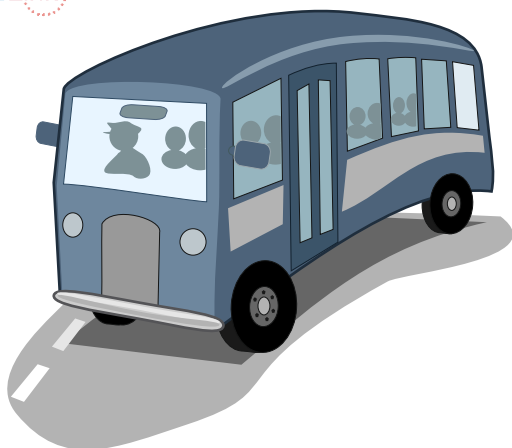
What is it for?

Where do you find it?

What is special about it?

What is the first sound?

Copyright ©2023 Speech Link Multimedia Ltd.



What is it for?

What group is it from?

What is special about it?

What is the first sound?

Copyright ©2023 Speech Link Multimedia Ltd.



What is it for?

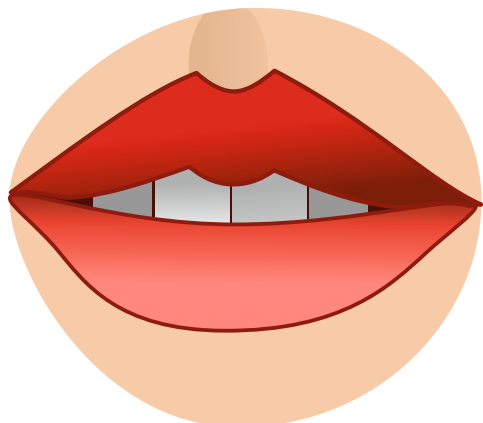
What group is it from?

What is special about it?

What is the first sound?

Copyright ©2023 Speech Link Multimedia Ltd.





What is it for?

Where do you find it?

What is special about it?

What is the first sound?

Copyright ©2023 Speech Link Multimedia Ltd.



What is it for?

Where do you find it?

What is special about it?

What is the first sound?

Copyright ©2023 Speech Link Multimedia Ltd.



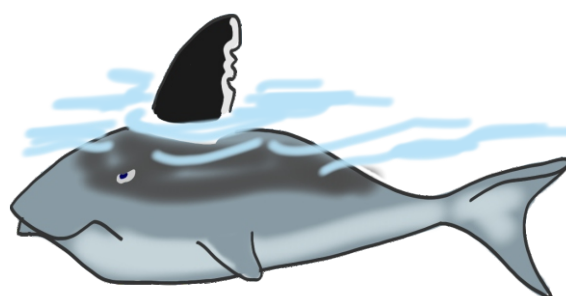
Where do you find it?

What group is it from?

What is special about it?

What is the first sound?

Copyright ©2023 Speech Link Multimedia Ltd.



Where do you find it?

What group is it from?

What is special about it?

What is the first sound?

Copyright ©2023 Speech Link Multimedia Ltd.



What is it for?

What group is it from?

What is special about it?

What is the first sound?

Copyright ©2023 Speech Link Multimedia Ltd.



What is it for?

What group is it from?

What is special about it?

What is the first sound?

Copyright ©2023 Speech Link Multimedia Ltd.

Where do you find it?

What group is it from?

What is special about it?

What is the first sound?

Copyright ©2023 Speech Link Multimedia Ltd.

What is it for?

What group is it from?

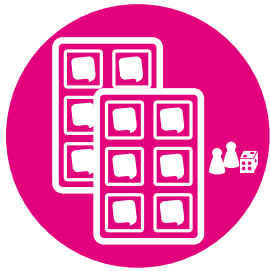
What is special about it?

What is the first sound?

Copyright ©2023 Speech Link Multimedia Ltd.



SCREENING & ASSESSMENT



PLANS & RESOURCES



HELP DESK SUPPORT



REPORTS & ANALYSIS



TRAINING

Speech Link and Language Link

Created and supported by our speech and language therapists, the Speech Link and Language Link online packages are available through an annual subscription. They are designed to work alongside your school's speech and language services to reduce waiting times, numbers of referrals and give you tools to manage children with SLCN within your classes.

Robust, child-friendly assessments plus guided interventions with hundreds of resources enable your staff to put appropriate support in place as early as possible. We provide in-package training and our friendly Speech & Language Help Desk is there to support you every step of the way.

BOOK A FREE TRIAL

www.speechandlanguage.info

The Link Speech and Language CPD

Our online, tutor-led, Link Speech and Language CPD courses will build staff skills and confidence for working with children with SLCN. Find out more at:

www.speechandlanguage.info/cpd

