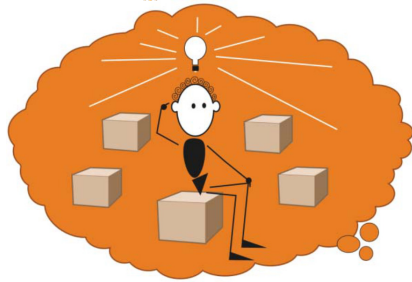


Command words

Use these cards to help students understand these important command words in spoken and written language. They can be used as bookmarks or as a complete set. When introducing a card make sure the student fully understands the word and has opportunities to practise the skills.



Explain

Remember

Answer the why and how when explaining

“This is because...”

“The reason for....”

“This means...”

Copyright ©2023 Speech Link Multimedia Ltd



Analyse

Remember

Break into points to analyse

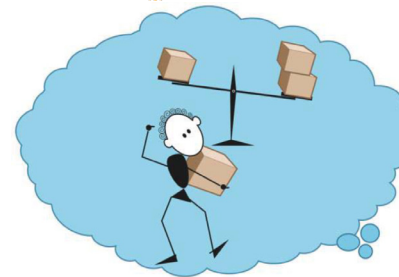
“Firstly....”

“This means that....”

“This causes...”

“Therefore...”

Copyright ©2023 Speech Link Multimedia Ltd



Evaluate

Remember

Judge from both sides to evaluate

“Whereas....”

“Whilst....”

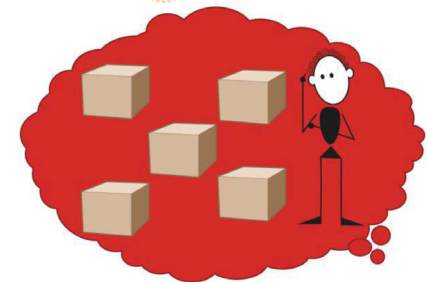
“An advantage is...”

“A disadvantage is...”

“On the one hand...”

“On the other hand...”

Copyright ©2023 Speech Link Multimedia Ltd



Describe

Remember

Answer the what and give details when describing

“It is...”

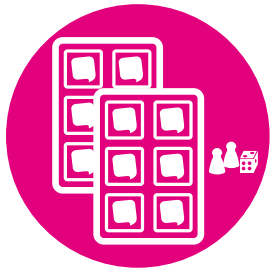
“It looks like...”

“It is composed of...”

Copyright ©2023 Speech Link Multimedia Ltd



SCREENING & ASSESSMENT



PLANS & RESOURCES



HELP DESK SUPPORT



REPORTS & ANALYSIS



TRAINING

Speech Link and Language Link

Created and supported by our speech and language therapists, the Speech Link and Language Link online packages are available through an annual subscription. They are designed to work alongside your school's speech and language services to reduce waiting times, numbers of referrals and give you tools to manage children with SLCN within your classes.

Robust, child-friendly assessments plus guided interventions with hundreds of resources enable your staff to put appropriate support in place as early as possible. We provide in-package training and our friendly Speech & Language Help Desk is there to support you every step of the way.

BOOK A FREE TRIAL

www.speechandlanguage.info

The Link Speech and Language CPD

Our online, tutor-led, Link Speech and Language CPD courses will build staff skills and confidence for working with children with SLCN. Find out more at:

www.speechandlanguage.info/cpd

